

Lexicon ati girama ti sinima

Christophe ati Olivier Defaye

Mo kọ pẹlu sinima

dajudaju 2

Tiwqñ / Eto asekale / igun ti wo

Ibon gbogbogbo, shot gun, shot alabode, isunmọ-oke... iwaju, shot keji, abẹlẹ, igun deede, igun giga, igun kekere, ijinle aaye.





Lexicon ati girama ti sinima

by Christophe ati Olivier Defaye

"Lexicon ati girama ti sinima", fun awọn oṣo ori 6 si 12,
ti wa ni gbekalẹ ni awọn fọmu ti a dajudaju kọ ti awọn ere ati awọn adaṣe
ti a ṣe lati awọn fiimu lori pẹpẹ: platform.films-pour-enfants.com

Ẹkọ yii yoo gba awọn omọ ile-iwe laaye lati ṣe idanimọ ati deede nipasẹ
fokabulari, oninṣẹ ati ikosile irinṣe, sugbon tun lati gbe jade
awọn iṣe igbaradi fun ṣiṣe fiimu kan.



Ti ri © Katie Sung Lee

AKOSO

1

[fireemu](#) / [Lori-kamẹra](#) / [Pa-kamẹra](#) / [Voice-lori](#)

Fimúlẹmù, didà, oniṣe kámẹrà, ikọṣe yiyọ.

2

[Tiwọn](#) / [Eto asekale](#) / [igun ti wo](#)

Ibon gbogbogbo, shot gun, shot alabode, isunmọ-oke... iwaju, shot keji,
abẹlẹ, igun deede, igun giga, igun kekere, ijinle aaye.

3

[Awọn agbeka](#) / [Ṣi shot](#) / [Panoramic](#) / [Irin-ajo](#) / [Sun](#)

Titẹ sii ati nlọ aaye ti awọn ohun kikọ ati awọn nkan.

4

[Shot](#) / [ọkọọkan](#) / [Si nmu](#)

5

[Itan](#) / [Oju iṣeṣe](#) / [Iwe itan](#) / [Itosọna](#)



O ti ʃe ye opin aʃayan iʃe-ʃiʃe

Loye ati lo awon irinʃe lati ʃajo aworan kan.
Bawo ni fifin ʃe ni ipa lori ifiranʃe naa?

ʃe afihan ifamọ ati oju inu re pelu ede cinematographic.
ʃo lati gbọ ati gbọye nipa lilo awon ọrọ ti o ye.
Lo iyaworan ni gbogbo oniruuru re bi ọna ti ikosile.



Iwin Extraterrestrial, Olivier Defaye, Ọdun 2017



Igbejade

Bawo ni lati fireemu?

Lati ʃe fireemu ati ʃajo aworan re, oniʃe kamera gbodo ʃeto awon ohun kiko ati awon nkan inu aaye ati ʃe ọpolofo awon yiyan lati gbe kamera re si ipo.

Fun apeere, ti oniʃe ẹrọ kamera ba fe lati fi ohun kiko silẹ:

. Oniʃe kamera yan iwon ohun kiko ninu fireemu.
O le pinu lati fi fireemu gbogbo ohun kiko silẹ tabi lati da apakan nikan ti ohun kiko silẹ, oju fun apeere.

Eyi ni a npe ni yiyan iwon ero.

Ọrọ eto ni ikosile eto asekalẹ mu ki o ʃee ʃe lati se iyato awon yatọ si orisi ti fireemu ati kọkan shot asekalẹ ni o ni oruko kan

o yatọ si, gbogboogbo shot, gun shot, alabode shot, sunmọ-soke ...

Ti oniʃe ẹrọ kamera ba yan lati fi awon ohun kiko silẹ pupo ni akoko kanna, o le gbe won si ijinle, diẹ e sii tabi kere si jina si kamera.

Eto ọrọ naa je tun lo lati ʃe apejuwe iʃeto awon nkan tabi awon ohun kiko ni ijinle: a bayi iyato awon foreground, keji ofurufu ati abele da lori ijinna won lati kamera. Fun tenumo ijinna yii, oniʃe kamera le ʃere lori ijinle aaye eyi ti o ni ibamu si apakan ti aworan ti awon eroja je didasilẹ ati kii ʃe blurry.

. Oniʃe kamera tun yan igun wiwo.

O yan lati fireemu ohun kiko lati iwaju, ni profaili, lati ehin ati yan ipo naa ni iga ti kamera ojulumo si ohun kiko. O le yan igun kan deede ati ipo kamera ni giga kanna bi ohun kiko, a ga igun ki o si fi kamera loke awon kiko tabi yan a kekere igun ki o si fi kamera ni isale awon kiko.

Ni otito, gbogbo awon aʃayan wonyi ni a ʃe ni akoko kanna ʃaju ki o to bere si fiimu.
Lati ranti gbogbo awon yiyan wonyi ʃaju ʃiʃe fiimu, oniʃe kamera ni awon irinʃe meji ni ọwo re: wulo pupo, oju iʃele ati iwe itan (wo Igba 5).

Igun kekere ni M awon eegun, Fritz Lang, 1931



Oludari nlo awon kekere igun lati fun awon ohun kiko a ako, superior ipo.

Lilo sinu M the Egun, Fritz Lang, 1931



Oludari nlo awon kekere igun lati fun awon iwa elege, ipo ti o kere julọ.

1 Ni sinima, ọrọ shot tun ni itumọ miiran: o je akoko laarin ibere ati ipari ti shot (wo Ipele 5).



Awon ibeere sinima

Iwe ibeere fun awon akẹkọ.

. Kini awon yiyan oniṣe ẹrọ kamẹra nigbati o ba ṣẹda ohun kikọ kan?
Iwon shot, ie iwon ti ohun kikọ ninu fireemu ati igun wiwo.

. Kini isunmọ-soke ti ohun kikọ?
Isunmọ jẹ fifin ti o ya apakan ti ara eniyan sọto (oju, ọwọ, ẹsẹ, ati bẹbẹ lọ).

. Kini eto gbogbogbo?
Atupa gbogbogbo jẹ fireemu kan ti o fihan gbogbo eto kan ati ṣapejuwe aaye kan.

. Kini ijinle aaye?

Ijinle aaye ni ibamu si apakan ti aworan ti awon eroja wa ni idojuko.

. Nibo ni kamẹra wa ni ibatan si ohun kikọ ninu ọran ti igun giga kan?
Kamẹra naa wa loke ohun kikọ.

. Nibo ni kamẹra wa ni ibatan si ohun kikọ ni igun kekere kan?
Kamẹra wa ni isalẹ ohun kikọ.

Fokabulari Kọ ẹkọ diẹ sii...

A sunmọ-soke ti wa ni ma npe sunmọ-soke, English igba.

Eto Amẹrika jẹ ilana

ti ohun kikọ silẹ ni aarin-itan.

Ti a npè ni bayi nitori o jẹ a fireemu pupọ lo ninu awon fiimu

Awon ara ilu Amẹrika lati awon ọdun 1910-1940.

Diving ati kekere igun

ti wa ni awon ofin tun lo ninu kikun ati fọtoyiya.

Diẹ blurry eroja ni a aworan ni ibamu si kan ti o tobi **ijinle aaye**.

Awon iṣe ṣiṣe

1. Ṣe iyatọ awon aworan ti o wa ninu fiimu ni aṣe titobi ti iwon-iwon (lati ọdun 6 si 12).

Ibọn gbogbogbo, ibọn gigan, ibọn alabode, isunmọ-oke...

(ohun elo lati fiimu "Alike" ati "Ọkọ ri" fun iṣe yii p 6 ati p 7)

2. Ṣe awon ẹgbẹ ti awon aworan "Awon ohun-ini ti sọnu" lati fiimu nipasẹ igun wiwo (lati 6 si 12 ọdun atijo).

(ohun elo lati fiimu naa "Ohun-ini Ti sọnu" fun iṣe yii p 8)

Igun deede, igun giga ati igun kekere.

3. Ṣe afiwe awon aworan meji ni lilo awon ọrọ dive, igun kekere (lati ọdun 9 si 12 ọdun).

4. Ya aworan tabi fidio pẹlu foonuiyara ti o yatọ si awon iwon eto ati awon igun wiwo oriṣiriṣi (lati 9 si 12 ọdun).

5. Fa ohun kikọ silẹ ni gun shot, alabode shot ati ki o sunmọ-soke.

6. Apejuwe awon foreground, arin ilẹ ati lehin ti awon aworan ninu awon fiimu (ogoro 6 to 12).

(ohun elo lati fiimu "Automne" fun iṣe ṣiṣe yii p 10)

7. Apejuwe awon didasilẹ ati blurry eroja ti awon aworan. (lati 6 si 12 ọdun atijo).

(ohun elo lati awon fiimu "Automne" fun iṣe ṣiṣe yii p 11)



Awon ohun elo fun işe-şise 1

Sotọ awon aworan lati fiimu "Alike" ni aşe titobi ti iwon-iwon ibon.

Tejade ati pinpin si awon omọ ile-iwe awon aworan lati fiimu ati awon asoye ti awon ireje shot.



Lati tejade (laisi awon nomba)

①



④



②



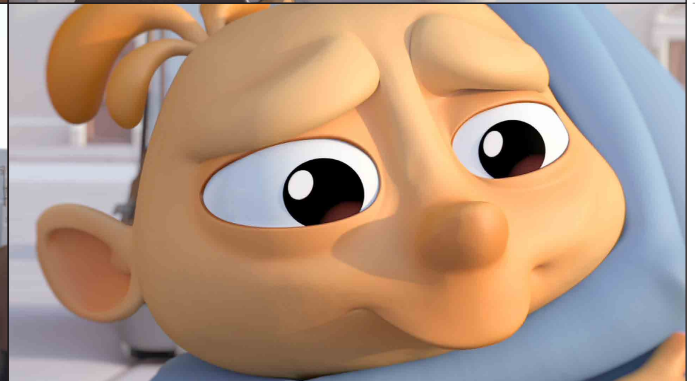
⑤



③



⑥



Bakanna © Daniel Martinez Lara & Rafa Cano Mendez

Eto ireje

1. Eto gbogbogbo n gbe işe naa si agbegbe ati agbegbe agbegbe.
2. Eto gbogbogbo, ti o sunmọ eto gbogbogbo, fojusi aaye kan gegebi ita tabi square kan.
3. Idaji-idaji shot nikan ni wiwa apakan ti eto naa.
4. Awon fireemu shot alabode okan tabi diẹ e sii ohun kikọ ni kikun.
5. Awon fireemu Close soke awon kikọ ni ipele egbe-ikun ati ki o şeda kan awon intimacy.
6. Awon fireemu isunmọ ni pekipẹki ati dojukọ awon ikosile ti ohun kikọ tabi lori ohun kan.



Awon ohun elo fun işe-şise 1

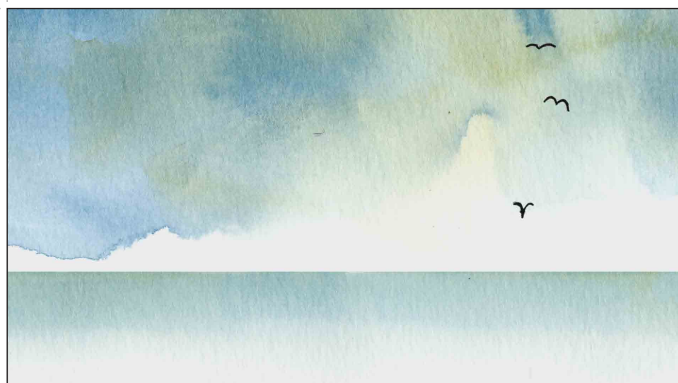
Şe iyasot̄ awon aworan lati fiimu naa "Ok̄o ri" ni aşe titobi ti iwon ibon.

Tejade ati pinpin si awon om̄o ile-iwe awon aworan lati fiimu ati awon asoye ti awon ireje shot.



Lati tejade (laisi awon nomb̄a)

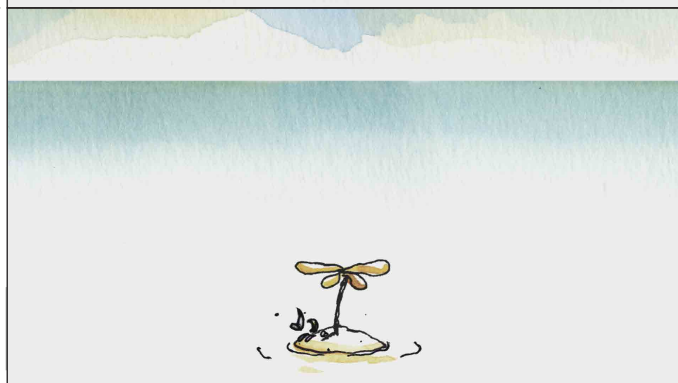
①



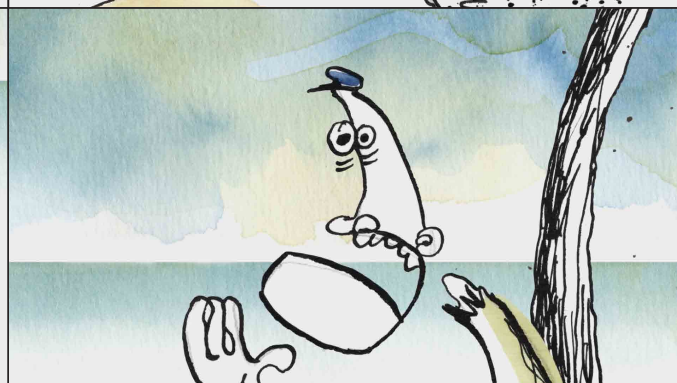
④



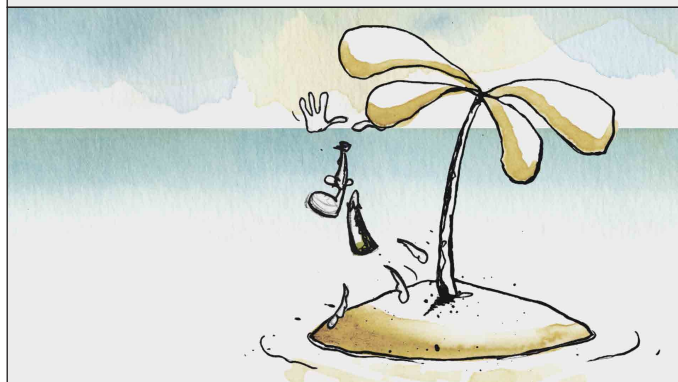
②



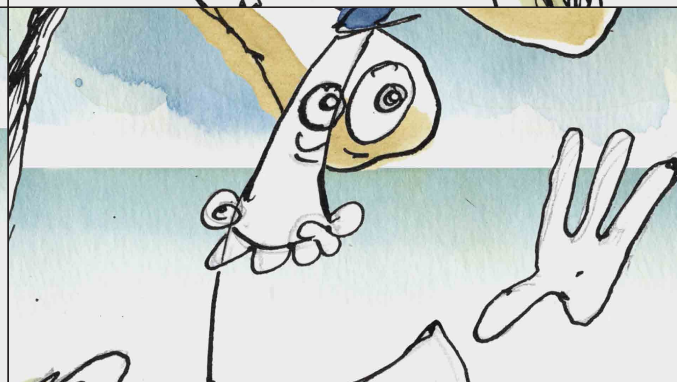
⑤



③



⑥



Ok̄o ri © Frodo Kuipers

Eto ireje

1. Eto gbogbogbo n gbe işe naa si agbegbe ati agbegbe agbegbe.
2. Eto gbogbogbo, ti o sunm̄o eto gbogbogbo, fojusi aaye kan gegebi ita tabi square kan.
3. Idaji-idaji shot nikan ni wiwa apakan ti eto naa.
4. Awon fireemu shot alabode okan tabi diẹ e sii ohun kik̄o ni kikun.
5. Awon fireemu Close soke awon kik̄o ni ipele egebe-ikun ati ki o şeda kan awon intimacy.
6. Awon fireemu isunm̄o ni pekipeki ati dojuk̄o awon ikosile ti ohun kik̄o tabi lori ohun kan.



Awon ohun elo fun işe-şise 2

Şe awon eḡbe ti awon aworan lati fiimu naa "Ohun-ini ti sonu" nipase wiwo igun.
Tejade ati pinpin si awon om̄o ile-iwe awon aworan lati fiimu ati awon asoye ti awon igun wiwo.



Lati tejade (laisi awon nomba)

①



①



②



②



③



③



Ohun ini ti sonu © Asa Lucander

Wiwo awon igun

1. Ni igun deede, kamera wa ni giga kanna bi awon ohun kiko tabi awon nkan.
2. Ni igun giga, kamera wa loke awon ohun kiko tabi awon nkan.
3. Ni igun kekere, kamera wa ni isale awon ohun kiko tabi awon nkan.



Awon ohun elo fun işe-şise 3

Şe afiwe awon aworan meji ni lilo awon or̄o besomi, igun kekere ati awon or̄o kan ni isale (lati odun 9 si 12 odun). Kekere, elege, laiseniyan, aabo / Tobi, fifi, lagbara, agbara...



Denise kekere, Theo Van Rysselberghe, 1895, MET

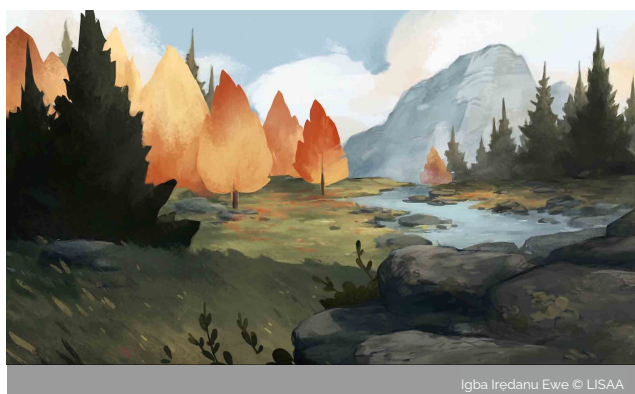


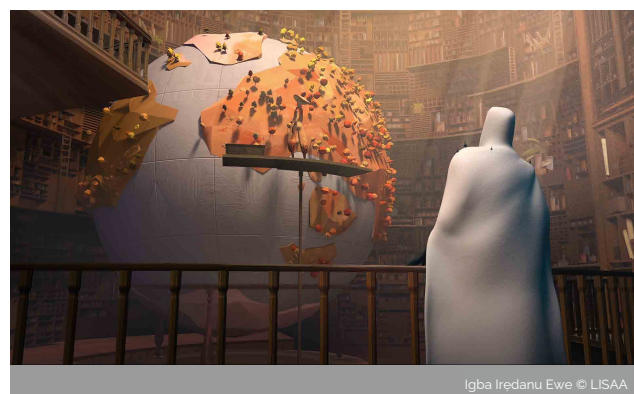
Louis XIV of France. Juste d'Egmont, 1654, Ambras castle



Awon ohun elo fun işe-şise 6

Şe apejuwe iwaju, ilẹ aarin ati lehin awon aworan ati lo diẹ ninu awon ọrọ ti o wa ni isalẹ (awon ojo ori 6 si 12).
Ni iwaju, lehin, ni ijinna, ni abẹlẹ, kekere, nla ...





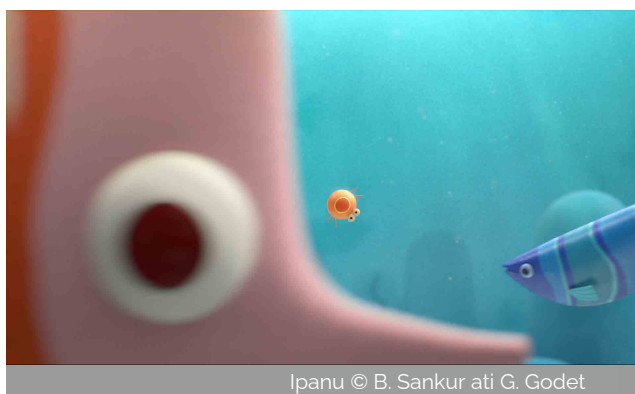




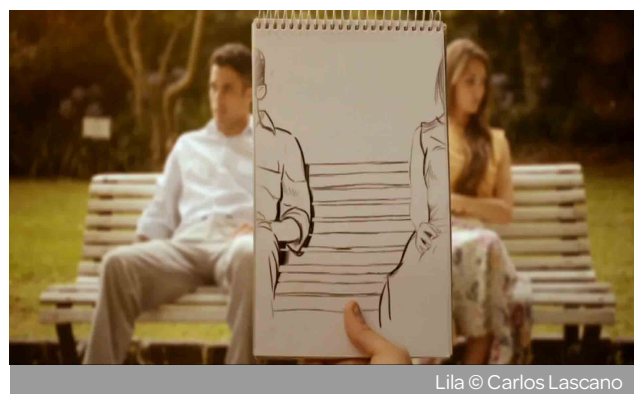


Awon ohun elo fun işe-şise 6

Apejuwe awon didasilē ati blurry eroja ti awon aworan ati ki o lo orō ijinle aaye. (lati 6 si 12 odun atijo).



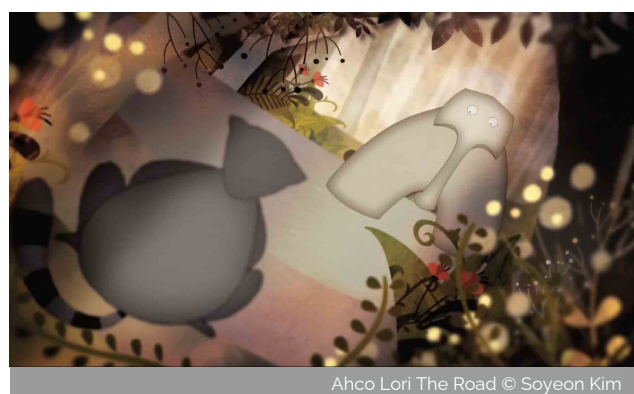
Ipanu © B. Sankur ati G. Godet



Lila © Carlos Lascano



Obinrin Labalaba © Les fiimu du Nord



Ahco Lori The Road © Soyeon Kim
