

Lexicon na uto asusu nke sinima

Christophe na Olivier Defaye

Ana m eji sinima na-akuzi ihe

usoro 2

Ihe mejuputara / Atumatu nha / akuku anya

Ogbara izugbe, ogbugba ogologo, ogbugba okara, igba nso...ihu ihu, ogbugba nke abuo, ndabere, nkiti akuku, elu akuku, ala ala, omimi nke ubi.





Lexicon na uto asusu nke sinima

Zby Christophe na Olivier Defaye

"Lexicon na uto uto nke sinima", maka afọ 6 ruo 12, a na-egosi ya n'udi nkuzi nke egwuregwu na mmega ahụ mejuputara emeputara site na fim n'elu ikpo okwu: platform.films-pour-enfants.com

Nke a N'ezie ga-ekwe ka ụmụ akwụkwọ chọpụta na kwesiri ekwesị site okwu, nyocha na okwu ngwaọrụ, kamakwa imezu mmemme nkwaadebe maka ime ihe nkiri.



Huru © Katie Sung Lee

Nchịkọta

1

[Frame / On-igwefoto / Gbanyuọ igwefoto / Voice-over](#)

Nhazi, imeputa ihe, onye na-ahụ maka igwefoto, ogbunigwe gbara agba.

2

[Ihe mejuputara / Atumatu nha / akukụ anya](#)

Ogbara izugbe, ogbugba ogologo, ogbugba okara, igba nso...ihu ihu, ogbugba nke abuo, ndabere, nkiti akukụ, elu akukụ, ala ala, omimi nke ubi.

3

[Ntughari / ka agbagburu / Panoramic / Njem / mbughari](#)

Ibanye na ihapu ogige nke mkpuru edemede na ihe.

4

[Gbara / Usoro / Ihe ngosi](#)

5

[Akukọ ihe mere eme / Onodu / Akwukwo akuko / Ntuziaka](#)



Ngwucha oru a turu anya ya

Ghota ma jiri ngwa ndi ahụ meputa onyonyo.
Kedu ka nhazi ahụ si emetuta ozi ahụ?

Jiri asusu cinematographic gosiputa uche gi na echiche gi.
Kwuo ka a nu ya ma ghota ya site na iji okwu okwu kwesiri ekwesị.
Jiri eserese n'udi ya niile di ka uzọ ngosiputa.



The Extraterrestrial Fairy, Olivier Defaye, 2017

Ngosiputa

Kedu ka esi eme ya?

Iji hazie na ide ihe onyonyo ya, onye na-ahụ maka igwefoto ga-ahaziri mkpuruedemede na ihe di n'ohja wee mee otutu nhoro iji dokwa igwefoto gi.

Dika omumaatu, o buru na onye na-ahụ maka igwefoto choro ihazi agwa:

. Onye na-ahụ maka igwefoto na-ahoro nha nke agwa di na etiti.
O nwere ike ikpebi ikpuzi agwa niile ma o bu ka o kee naani akuku nke agwa, ihu dika omumaatu.

A na-akpo nke a ihoro nha atumatu.

Atumatu okwu n'onu ogugu atumatu okwu na-eme ka o kwe omume imata odjiche nke udi framing di iche iche na onu ogugu ogbugba o bu na nwere aha **di iche iche, ogbugba izugbe, ogologo ogbugba, ogbugba okara, nso nso...**

O buru na onye na-ahụ maka igwefoto ahoro imebe otutu mkpuruedemede n'otu oge, o nwere ike dobe ha n'ime omimi, karja ma o bu obere tere aka na igwefoto.

A na-ejikwa okwu atumatu kwawaa nhazi ihe ma o bu agwa na omimi: anyi si otu imata odjiche di n'ihu, nke abuo ugbolu na ndabere dabere na anya ha na igwefoto. Maka

mee ka anya a puta ihe, onye na-ahụ maka igwefoto nwere ike igwu egwu na omimi nke ubi nke kwekoro na akuku nke ihe oyiyi nke ihe ndi di nko na-adighi mma.

. Onye na-ahụ maka igwefoto na-ahorokwa akuku nlele.

O na-ahoro imeputa agwa ahụ site n'ihu, na profailu, site na azu wee horo onodu n'idi elu nke igwefoto ikwu na agwa. O nwere ike horo akuku nkiti na dowe igwefoto n'otu ogo di ka agwa, a elu akuku ma tinye igwefoto n'elu agwa ma o bu horo a obere akuku ma tinye igwefoto n'okpuru agwa.

N'ezie, a na-eme nhoro ndi a niile n'otu oge tupu imalite ise ihe nkiri.

Iji cheta nhoro ndi a niile tupu ise foto, onye na-ahụ maka igwefoto nwere ngwaoru abuo di n'aka ya: bara uru nke ukwu, onodu ahụ na boodu akuku (lee Oge 5).

Obere ala na M ndi a buru onu, Fritz Lang, 1931



Onye nduzi na-eji akuku di ala na-enye agwa a na-achi, elu onodu.

Ibanye n'ime M ndi a buru onu, Fritz Lang, 1931



Onye nduzi na-eji akuku di ala na-enye agwa onye na-esighi ike, onodu di ala.

1 Na sinima, okwu ogbugba nwekwara ihe ozọ putara: o bu oge di n'etiti mmalite na njedebe nke ogbugba (lee Oge 5).



Ajụjụ sinima

Ajụjụ maka ụmụ akwụkwọ.

. Kedu nhọrọ onye na-ahụ maka igwefoto mgbe ị na-emepụta agwa? Onu ogugu nke agbapụ, ya bụ nha nke agwa dị na etiti na akuku anya.

. Kedu ihe bụ nso nso nke agwa? Ihe dị nso bụ nhazi nke na-ekewapụ akuku ahụ mmadụ (ihu, aka, ụkwụ, wdg).

. Kedu ihe bụ atumatụ izugbe? Ntugharị n'ozuzu bụ nhazi nke na-egosi nhazi niile ma kọwaa ebe.

. Gịnị bụ omimi nke ubi?

Omimi nke ubi kwekọrọ na akuku nke ihe oyiyi nke ihe ndị a na-elekwasị anya.

. Ebee ka igwefoto dij n'ihe gbasara agwa n'ihe gbasara akuku dij elu? Igwefoto dij n'elu agwa.

. Ebee ka igwefoto dij n'ihe gbasara agwa n'akuku dij ala? Igwefoto dij n'okpuru agwa.

Okwu Mụtakwuo...

A na-akpọ onye nso mgbe ụfọdụ nso nso, okwu bekee.

Atumatụ America bụ usoro

nke agwa n'etiti apata ụkwụ. Aha ya otu a n'ihu na ọ bụ a Framing ukwuu eji na fim Ndi America sitere na 1910-1940.

Ndakpu mmiri na **ala ala** bụkwa okwu ejirikwa na eserese na foto.

Ihe ole na ole na-agba agba na a onyonyo dabara na nnukwu **omimi nke ubi**.

Ihe omume

1. Kewaa ihe oyiyi nke ihe nkiri ahụ n'usoro nke nha nha (site na 6 ruo 12 afọ). Ọgbara izugbe, egbe ogologo, ogbugba ọkara, nso nso... (ihe si na fim "Alike" na "Ugbọ kpuru" maka ọrụ a p 6 na p 7)

2. Mee otu nke ihe oyiyi "Ihe onwunwe furu efu" site na ihe nkiri ahụ site na nlele anya (site na 6 ruo 12 afọ). (ihe sitere na ihe nkiri ahụ bụ "Ngwongwo Echefuola" maka ọrụ a p 8) Nkịtị nkịtị, elu akuku na ala ala.

3. Tulee ihe osise abụọ na-eji okwu ndakpu mmiri, obere akuku (site na 9 ruo 12 afọ).

4. Were foto ma ọ bụ vidiyo na smartphone nke atumatụ atumatụ dij iche iche na akuku nlele dij iche iche (site na 9 ruo 12 afọ).

5. Sepụta agwa agbadoro ogologo oge, ogbugba ọkara na nso nso.

6. Kọwaa ihu ihu, etiti etiti na ndabere nke onyonyo dij na fim ahụ (afọ 6 ruo 12). (ihe sitere na fim "Automne" maka ọrụ a p 10)

7. Kọwaa ihe oyiyi dij nkọ na nke na-adighị ahụkebe. (site na 6 ruo 12 afọ). (ihe sitere na fim "Automne" maka ọrụ a p 11)



Ihe eji eme ihe 1

Hazie onyonyo site na ihe nkiri ahụ "Alike" n'usoro n'usoro n'ogo nke ogbugba egbe. Biputa ma kesaa umu akwukwo onyonyo sitere na ihe nkiri na nkowa nke akpirikpa agbapu.



Iji biputa (na-enweghi onugwu)

①



④



②



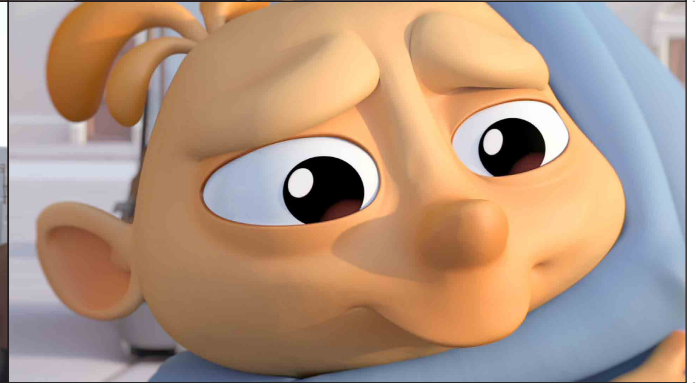
⑤



③



⑥



Dj ka © Daniel Martinez Lara & Rafa Cano Mendez

Atumatu akpirikpa

1. Atumatu izugbe na-etinye ihe omume na mpaghara ala ya na topological.
2. Atumatu n'ozuzu, nso na atumatu izugbe, na-elekwasị anya na ebe dij ka okporo amá ma o bu square.
3. Okara nke agba agba na-ekpuchi naanị akuku nke ntala ahụ.
4. The okara ogbugba okpokolo agba otu ma o bu karja odide n'uju.
5. Ihe mmechi ahụ na-edobe mkpuru edemede n'ogo ukwu ma meputa ufodu mmekorita.
6. Okpokoro dij nso na-akpachi anya ma na-elekwasị anya na okwu agwa ma o bu ihe.



Ihe eji eme ihe 1

Hazie onyonyo site na ihe nkiri ahụ "ugbo mmiri kpuru" n'usoro n'ogo nke ogbunigwe gbara. Biputa ma kesaa umu akwukwo onyonyo sitere na ihe nkiri na nkowa nke akpirikpa agbapu.

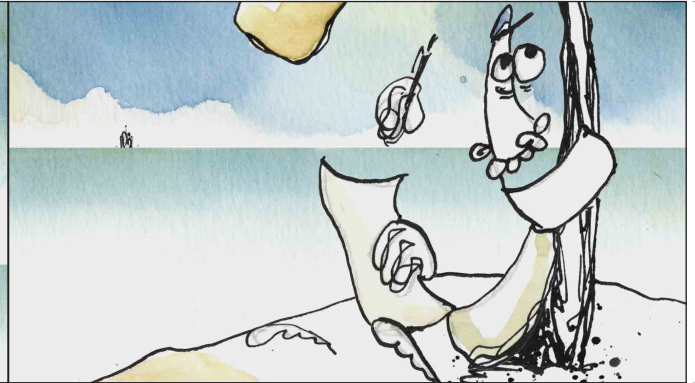


Iji biputa (na-enweghi onugwu)

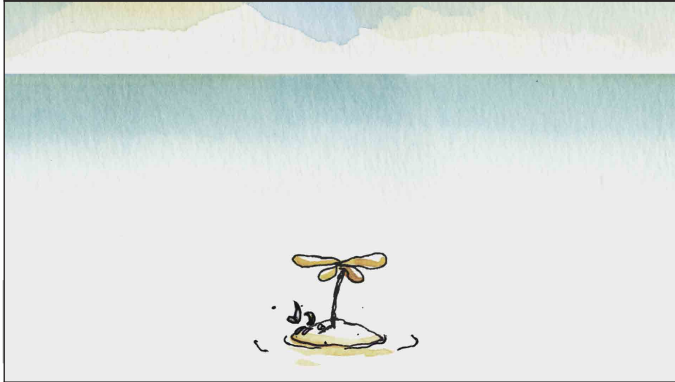
①



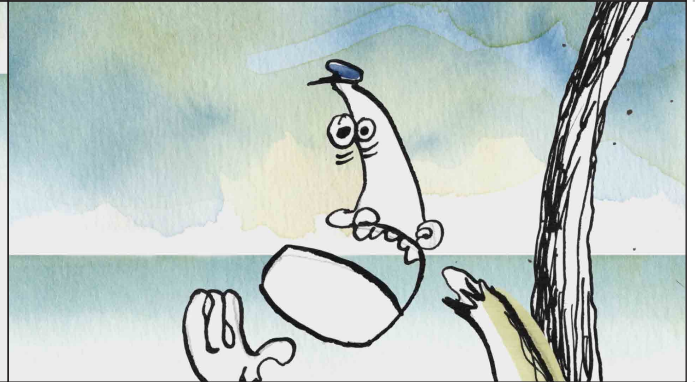
④



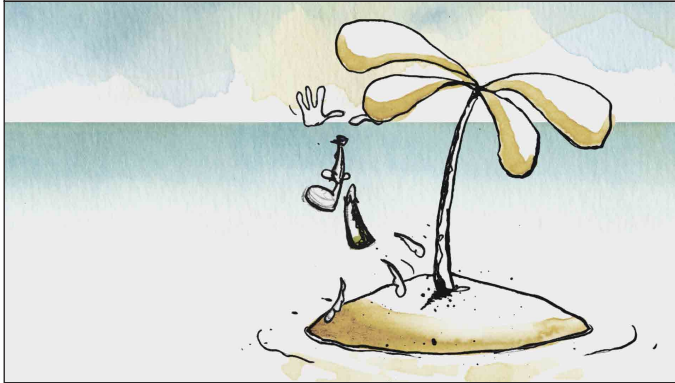
②



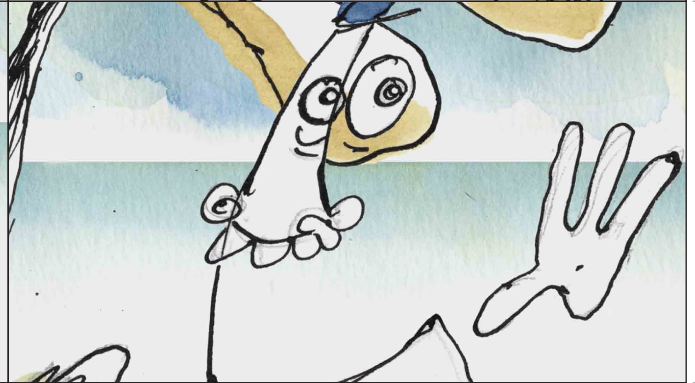
⑤



③



⑥



Ugbo mmiri kpuru © Frodo Kuipers

Atumatu akpirikpa

1. Atumatu izugbe na-etinye ihe omume na mpaghara ala ya na topological.
2. Atumatu n'ozuzu, nso na atumatu izugbe, na-elekwasị anya na ebe dị ka okporo ámá ma ọ bụ square.
3. Okara nke agba agba na-ekpuchi naanị akuku nke ntọala ahụ.
4. The okara ogbugba okpokolo agba otu ma ọ bụ karịa odide n'uju.
5. Ihe mmechi ahụ na-edobe mkpụrụedemede n'ogo ukwu ma meputa ụfọdụ mmekeji.
6. Okpokoro dị nso na-akpachi anya ma na-elekwasị anya na okwu agwa ma ọ bụ ihe.



Ihe eji eme ihe 2

Mee otu ihe onyonyo site na ihe nkiri ahụ "Akukụ Echefuru" site na ilele akukụ.
Biputa ma kesaa umu akwukwo onyonyo site na ihe nkiri na nkowa nke akukụ nlele.



Iji biputa (na-enweghi onugwu)

①



①



②



②



③



③



Ihe onwunwe furu efu © Asa Lucander

Akukụ nlele

1. N'akukụ nkiti, igwefoto di n'ogo di elu di ka mkpuruedemede ma o bu ihe.
2. N'ebe di elu, igwefoto di n'elu ihe odide ma o bu ihe.
3. N'akukụ di ala, igwefoto di n'okpuru mkpuruedemede ma o bu ihe.



Ihe eji eme ihe 3

Tulee ihe osise abuo a site na iji okwu ndaba, obere akuku na okwu ufodu di n'okpuru (site na afọ 9 ruo 12). Obere, adighi ike, adighi emeru ahụ, nchebe / buru ibu, na-ebunye, di ike, ike ...



Denise nta, Theo Van Rysselberghe, 1895, MET

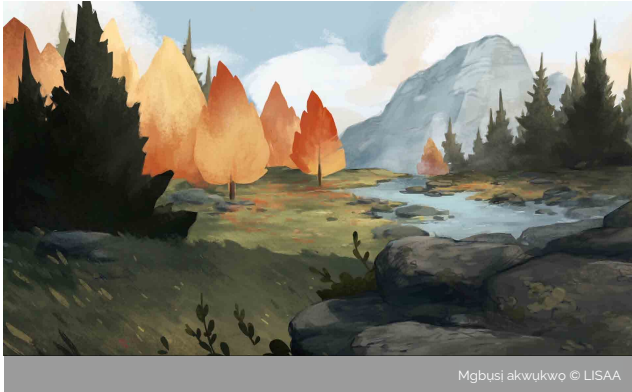


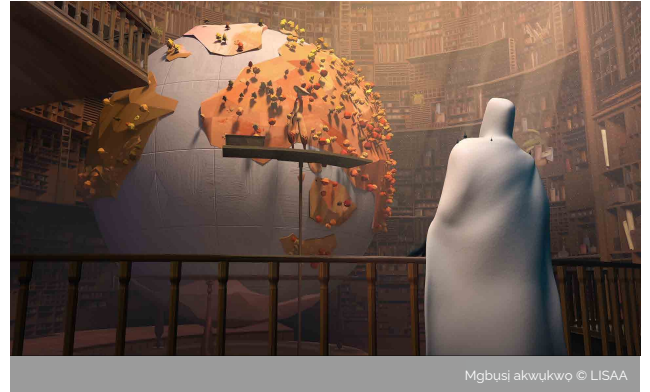
Louis XIV nke France, Juste d'Egmont, 1654, Ambras castle

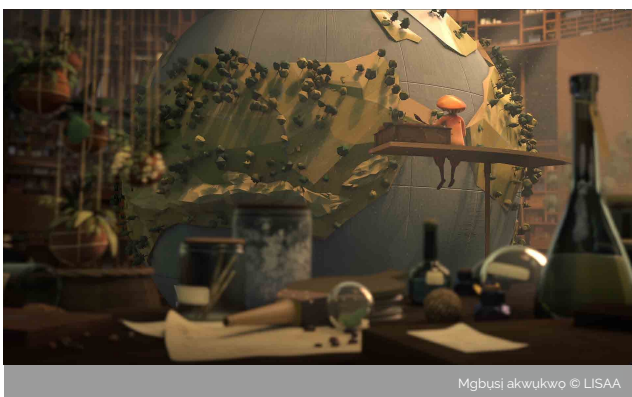


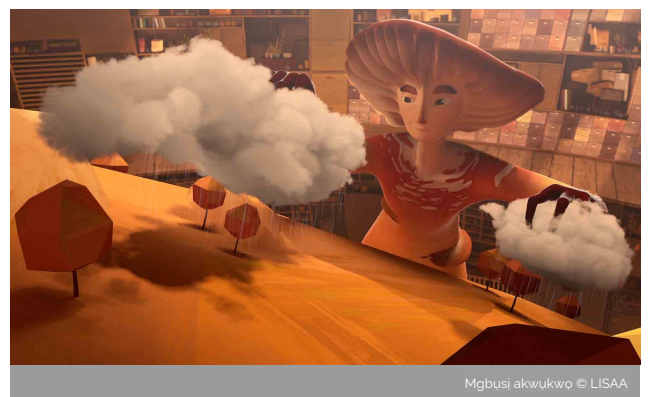
Ihe eji eme ihe 6

Kwaa ihu ihu, ala etiti na ndabere nke foto a wee jiri ụfọdụ okwu ndị dị n'okpuru (afọ 6 ruo 12).
N'ihu, n'azụ, n'ebe dị anya, n'azụ, obere, nnukwu ...





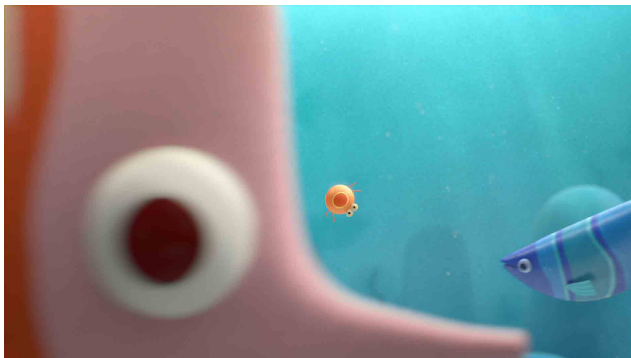




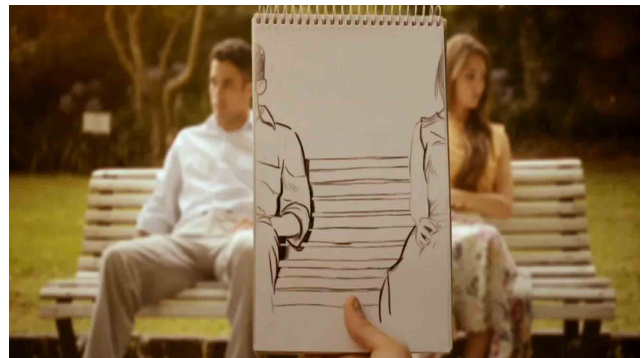


Ihe eji eme ihe 6

Kwaa ihe oyiyi di nko na nke na-adighi ahukebe wee jiri okwu omimi nke ubi. (site na 6 ruo 12 afu).



Nri © B. Sankur na G. Godet



Lila © Carlos Lascano



The Butterfly Woman © Les films du Nord



Ahco On The Road © Soyeon Kim
